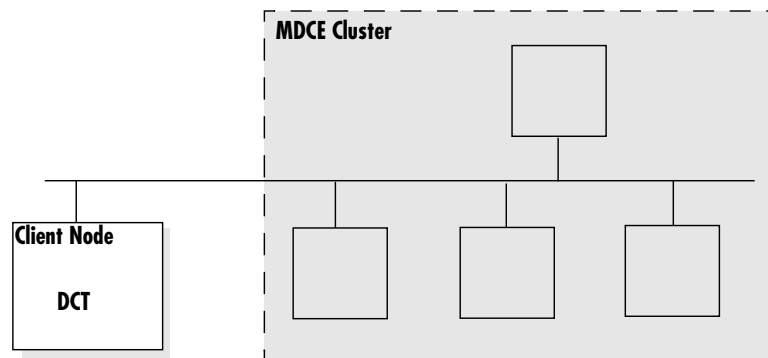


# Stage 3 of 4

## Stage 3 of 4: Installing Distributed Computing Toolbox 3.1 on UNIX

Now that your cluster is ready to be used, you have to install Distributed Computing Toolbox on the computer you will use to write MATLAB applications. This is called the *client* system. These instructions assume that each client node already has an existing MATLAB R2007a installation.

This figure shows the installations that you must perform on client nodes.



### Product Installations on Client Node

#### Step 1: Update the License File on the Client Node

To update the License File with the passcodes you received in your license e-mail, follow these instructions.

---

**Note** In these instructions, *matlabroot* refers to the directory where MATLAB is installed on the client computer, not to be confused with the MDCE cluster computers.

---

- 1 Stop the license manager. Open a terminal window and use the following command from the *matlabroot/etc* directory.  

```
./lmdown
```
- 2 Find the e-mail you got from your sales representative with the subject "Your MathWorks Software Purchase (or Trial)". This e-mail contains the license information you need to install Distributed Computing Toolbox.

- 3 Open the License File (`license.dat`) located in the `matlabroot/etc` directory using a text editing application (`vi`, `emacs`, etc).
- 4 In the e-mail message, select all the licensing information from the `BEGIN` line to the `END` line, inclusive, and append this information to the end of the License File. The licensing information is one or more `INCREMENT` lines that look similar to:

```
INCREMENT MATLAB_Distrib_Comp_Engine MLM 17 01-dec-2000 8 \  
BD530123654ECED9D04A SN=DEMO
```

Make to copy all the information between the `BEGIN` and `END` lines, including the comment lines.

- 5 Save and close the License File.
- 6 Restart the license manager using the following command from the `matlabroot/etc` directory.  

```
./lmstart
```

## Step 2: Download the Latest Version of Distributed Computing Toolbox

If you already have R2007a MATLAB installed on your client computer, you can download the latest version of Distributed Computing Toolbox from the MathWorks Web site and install it on every client node.

---

**Note** The following instructions describe how to download the toolbox from the MathWorks Web site. Alternatively, you can install Distributed Computing Toolbox from the R2007a installation DVD. For instructions on installing a toolbox from the DVD, see the installation documentation that came with the DVD, or online at <http://www.mathworks.com/access/helpdesk/help/base/install/install.html>.

---

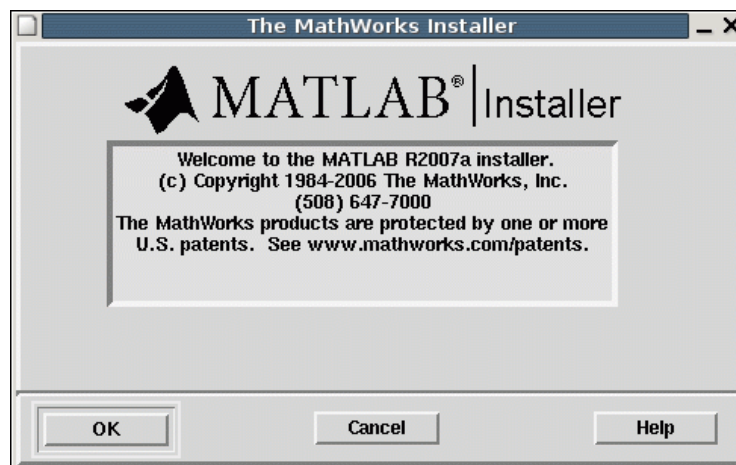
- 1 Download the product to a location accessible to all client nodes. You can download the product once and install it multiple times.
  - If you are a trial user you have received a link to a location where you can download the product.

- If you are a licensed user, go to the MathWorks Web site, [www.mathworks.com/web\\_downloads/](http://www.mathworks.com/web_downloads/), and download the product from your account.
- 2 Follow the online instructions for extracting files from the tar file and preparing the installer.

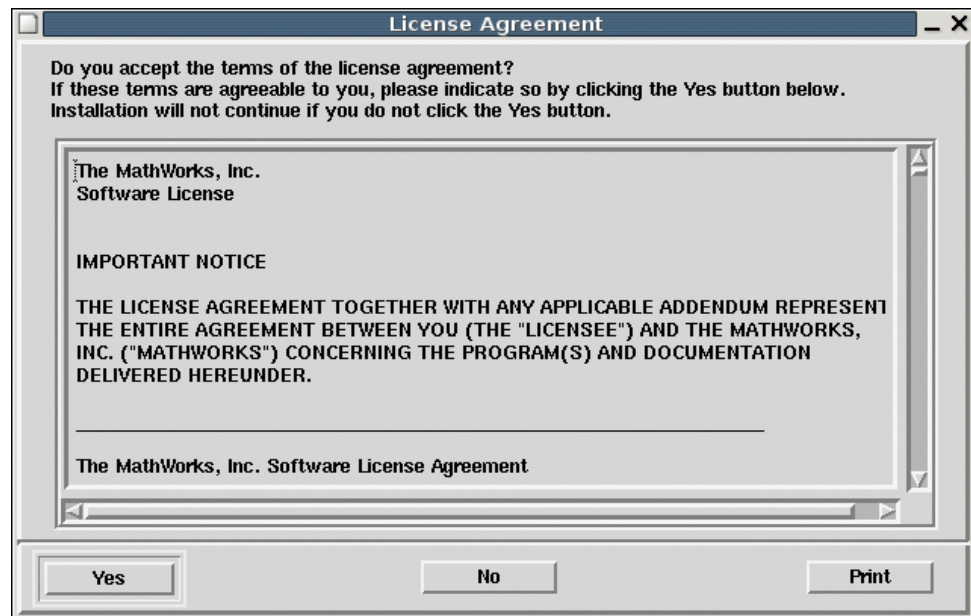
### Step 3: Run the Installer

After downloading and extracting the files, follow these instructions to install Distributed Computing Toolbox on a client node.

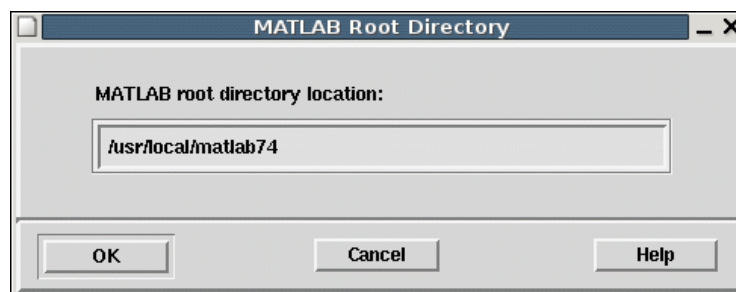
- 1 Run the installer from the temporary download directory. The installer displays the following welcome screen. Click **OK** to start the installation.



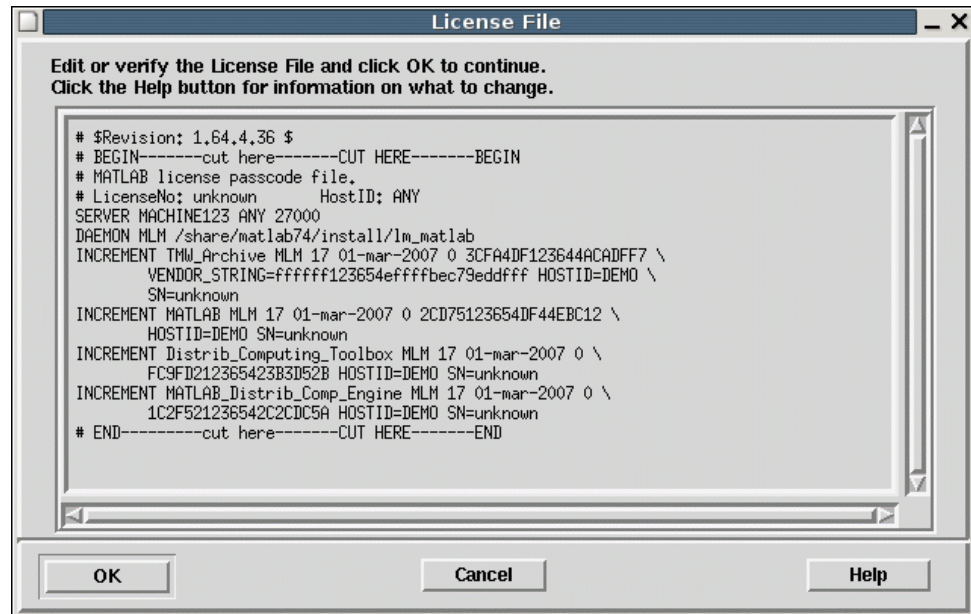
- 2 Review the license agreement. If you accept the terms of the agreement, click **Yes** to proceed with the installation.



- 3 Verify the name of the installation directory in the **MATLAB Root Directory** dialog box and then click **OK**. This should be the name of your existing MATLAB installation directory.



- 4 Verify your License File in the **License File** dialog box and click **OK**. This is the license.dat file you placed in the *matlabroot* directory.

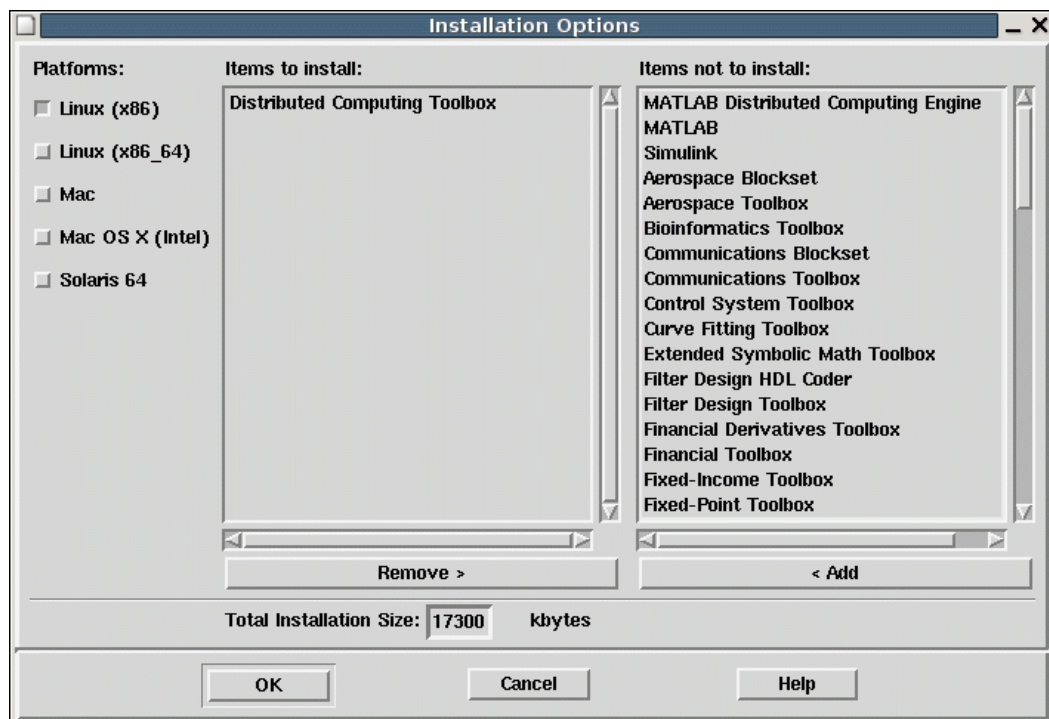


## Installing DCT 3.1

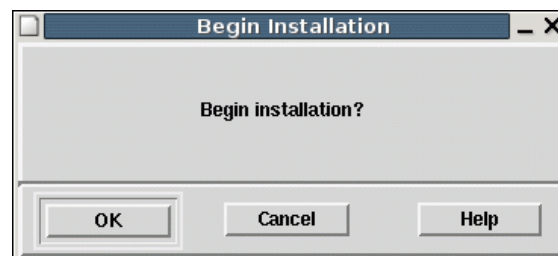
## Stage 3 of 4

- 5 Select the platforms and the products that you want to install in the **Installation Options** dialog box and then click **OK**.

In the **Items to install** list, select only Distributed Computing Toolbox. Move all other products into the **Items not to install** pane.

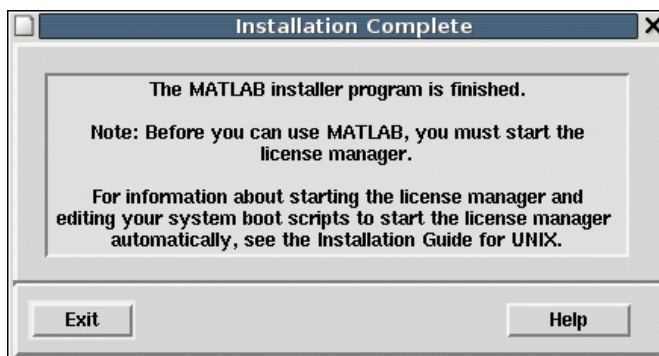


- 6 The installer displays the **Begin Installation** dialog box. Click **OK** to begin the installation.



For help, contact the MathWorks install support team at 508-647-7000 or [http://www.mathworks.com/support/contact\\_us/](http://www.mathworks.com/support/contact_us/).

- 7 When the installation is complete, the installer displays the setup complete dialog box. Click **Exit** to finish the installation.



## Step 4: Start MATLAB on the Client System

To start MATLAB, navigate to the *matlabroot/bin* directory and execute the following command:

```
./matlab
```

---

**Note** To start MATLAB, you must be logged in as the user account that has permission to use the installation.

---

© COPYRIGHT 2005–2007 by The MathWorks, Inc. MATLAB, Simulink, Handle Graphics, Real-Time Workshop, and xPC TargetBox are registered trademarks of The MathWorks, Inc. Other product or brand names are trademarks or registered trademarks of their respective holders.

The MathWorks products are protected by one or more U.S. patents. Please see [www.mathworks.com/patents](http://www.mathworks.com/patents) for more information.